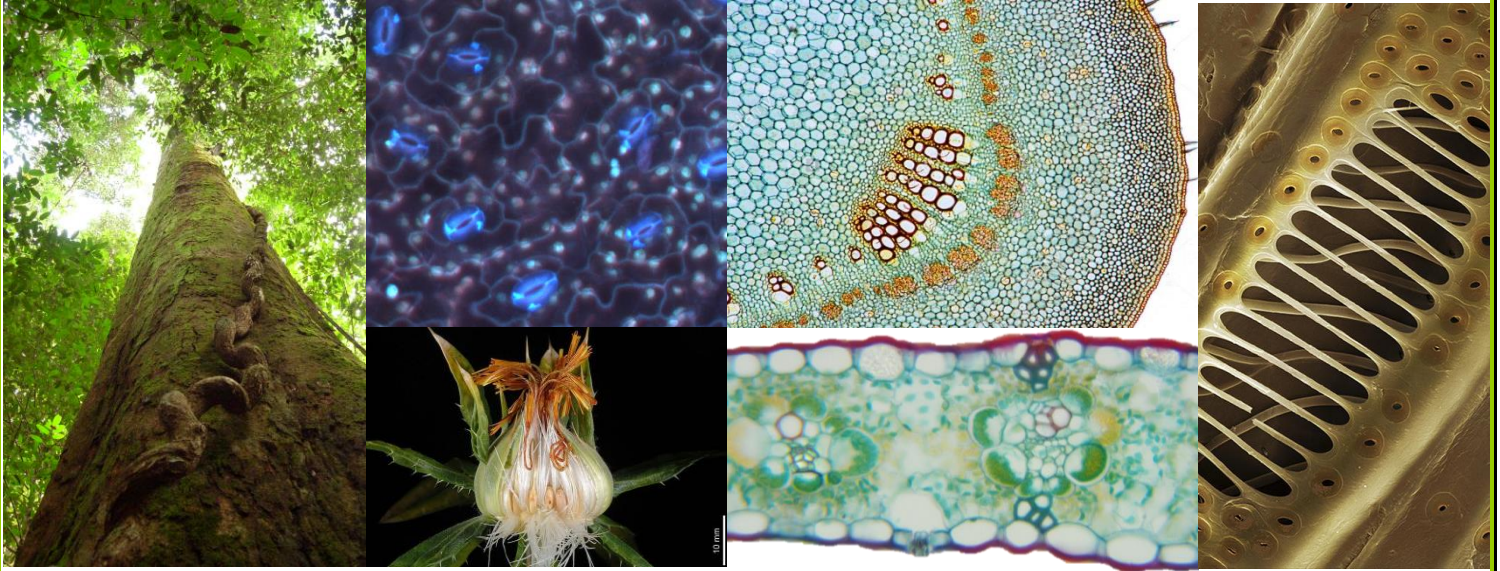


NEW FALL 2016 BIOS COURSE!!

BIOS 317: THE BIOLOGY OF PLANTS



4-credit Course with Laboratory, Credit towards Biology Major
Meets MWF 9:30-10:20am, Lab W 2-5pm

Dr. Sabrina Russo
208 Manter Hall srusso2@unl.edu

- The biology of plants, including anatomy, morphology, growth, development, and genetics in ecological and evolutionary contexts
- Identification and function of plant structures at the cellular, tissue, and organ levels in relation to performance in varying environments, including climate change
- Experience with important laboratory, greenhouse, and field skills used in the study of plants, including data collection and analysis in field and experimental settings
- Applications of plant biology to problems in related scientific fields, such as environmental climate change and agriculture.